



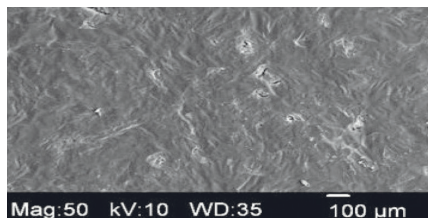
## RESODURA<sup>®</sup> *matrix onlay plus*

### Collagen Dural Regeneration Matrix

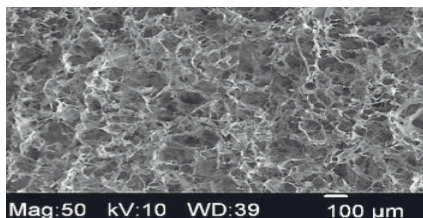
A unique combination of excellent drapeability, leak resistance and balanced resorption makes RESODURA<sup>®</sup>*matrix onlay plus* the top choice in duraplasty. RESODURA<sup>®</sup>*matrix onlay plus* is a completely conformable and resorbable membrane matrix engineered from highly purified type I collagen. The top layer of the sponge is sealed with a thin layer of collagen film, rendering it leak resistant. It is indicated for use as an onlay (non-sutured) collagen membrane for the repair of the dura mater. RESODURA<sup>®</sup>*matrix onlay plus* facilitates healing with balanced in-vivo resorption of the implant and regeneration of host tissue.



Top Layer - Smooth Film

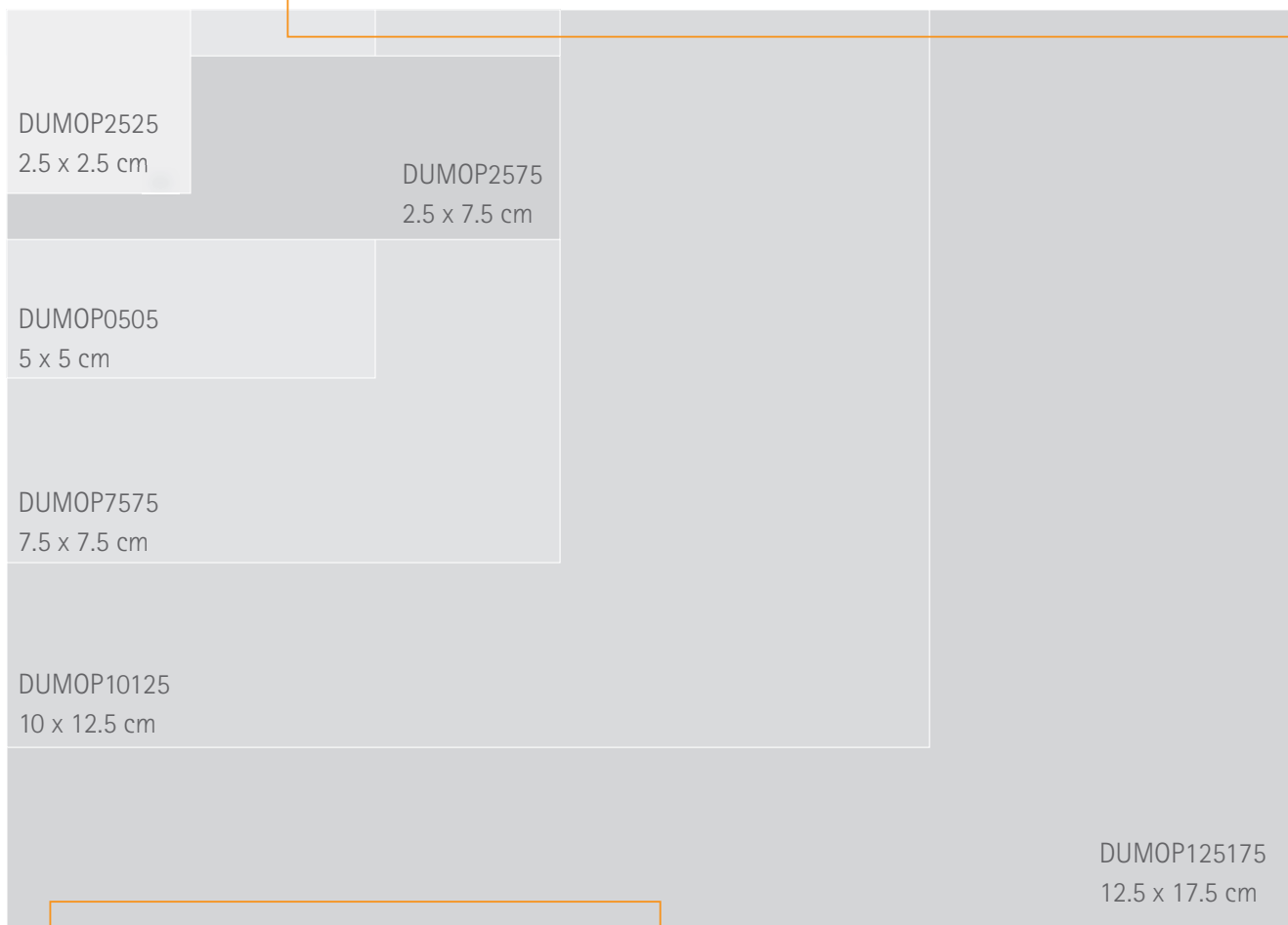


Bottom Layer - Porous



- Highly purified type I collagen
- Sponge with leak resistant top layer
- Onlay implantation
- Controlled resorption for effective dural repair
- Drapeable, yet repositionable

## Collagen Dural Regeneration Matrix



REF	SIZE	PACKAGE CONTENTS
DUMOP2525	2.5 x 2.5 cm	1 matrix
DUMOP2575	2.5 x 7.5 cm	1 matrix
DUMOP0505	5 x 5 cm	1 matrix
DUMOP7575	7.5 x 7.5 cm	1 matrix
DUMOP10125	10 x 12.5 cm	1 matrix
DUMOP125175	12.5 x 17.5 cm	1 matrix



**Collagen Matrix, Inc.**

15 Thornton Road, Oakland, NJ 07436, USA

**Tel:** 201.405.1477, **Toll Free:** 888.405.1001

**Fax:** 201.405.1355

**[www.collagenmatrix.com](http://www.collagenmatrix.com)**